

PLAZA NEWS LETTER (April, 2023)

March is the time of year when graduation ceremonies are held at schools and universities. In Japan, parents who attend their children's graduation ceremonies wear formal attire. At college graduation ceremonies, students wear HAKAMA, KIMONO, or suits. You will probably have many opportunities to see them.

The Plaza received 57 consultations in February. We share some of them with advice from the Plaza.

Q : My current status of residence is Specified Skilled Worker. I established my company a year ago and came to Kumamoto last month to open a restaurant. I would like a specialist to support me to change my status of residence.

A : An administrative scrivener explained about the application for a change of status to "management/administrative" and the application for the change was processed by an administrative scrivener. There is a charge for the proxy procedure.

Q : (From a Japanese person) A Vietnamese technical intern in Kumamoto is in trouble. Is there any place that offers any assistance? I also want him/her to connect with the Vietnamese community in Kumamoto.

The association's Facebook

A : We consulted with the Vietnamese Association in Kumamoto.

They would like to know what kind of trouble he/she is having and support needed. Please ask he/she to directly contact the association's Facebook so that they can discuss what can be done.



Q : I am consulting on behalf of an acquaintance who is currently studying in Kumamoto. He/She is considering to apply Japanese citizenship due to the situation in the home country. What the procedure is like?

A: The administrative scrivener informed 2 methods. One is to find a job related to the field you are studying and apply for naturalization after 10 years, when you will have established a good foundation for your life. The other is to marry a Japanese citizen. However, either method requires equivalent of N4 Japanese language proficiency.

Q : I resigned last month and am currently seeking a new job. My current period of stay is not yet over, but I plan to temporarily return home for two weeks this month. Will there be any problems when I re-enter Japan?

A : His/her current status of residence will no longer be valid once he/she leaves the country since he/she is out of work. It is expected that when he/she re-enters Japan, it will be as a temporary visitor. We advised that if he/she wanted to continue working in Japan, find a new job before temporarily returning home.

If you have any problems, please contact the Kumamoto City Consultation and Support Plaza for Foreign Residents.

「Cherry blossom」

This month we introduce "Cherry blossoms". It has long been a favorite flower in Japan. A book written more than 1,000 years ago mentions it. In Japan, people enjoy cherry blossoms together at "HANAMI" in the spring. Every year when the cherry blossoms bloom, the news declare proclamation of the flowering season. Japan Meteorological Agency official goes to see the standard cherry tree and declares it in bloom if some of the flowers are in bloom.

Cherry blossoms can also be eaten. Next, we introduce foods made from cherry blossoms.



SAKURA-MOCHI ... Rice cake with bean paste wrapped in a preserved cherry leaf. It is a little different in the East and West part of the country.

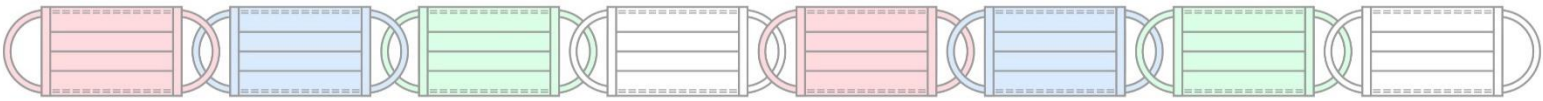


SAKURA-YU...Drink made of boiled water poured over preserved cherry leaves and blossoms. It has a nice aroma of cherry. It is also called cherry blossom tea.

Other food called SANSHOKU DANGO (pink, white, and green dumplings) are also eaten during HANAMI (cherry blossom viewing).

Enjoy HANAMI with food and drinks made from cherry blossoms!





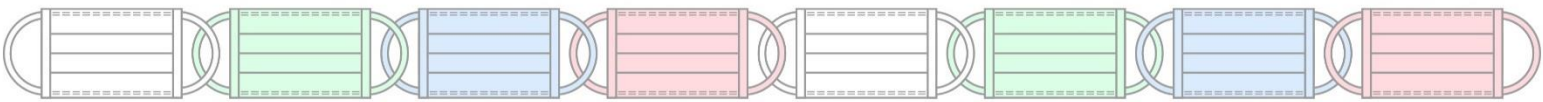
Wearing a Mask

From Monday, March 13, 2023, you can decide whether or not to wear a mask.

However, it is recommended to wear a mask in hospitals, places with elderly people, and on crowded buses and trains.

Outdoors, if you can keep a distance of at least 2m from people, you do not need a mask.

Decide whether or not to wear a mask depending on the situation.

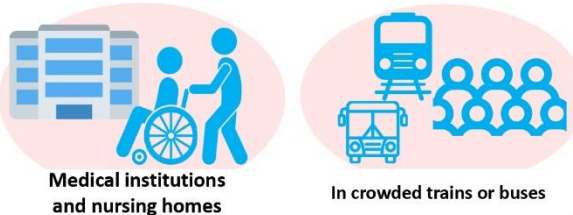


COVID-19 Measures

Mask Use Guidance Starting From 13 March 2023

Mask Use Will Largely Depend On Personal Choice instead of current general requirements

Mask use will be recommended for:



Medical institutions and nursing homes

In crowded trains or buses

Mask use will provide protection for:

People who have a higher risk of serious illness (*Especially in crowded settings)



Elderly People

People with underlying medical conditions

Pregnant women

Please remember to be understanding and respectful of personal choices not to force someone to wear or take off their masks

*The operators are permitted to enforce certain regulations for its users and employees on its premises



COVID-19 かんせん たいさく

これまで マスクは、そとでは つけなくてよい、いえのなかでは つける、とおねがいでいたしましたが、

2023/3/13から、マスクをつけるかは必ずかはあなたの はんだんに なります

ただし、したにかいてあることに、きをつけましょう

まわりのひとに、かんせんを、ひろげないために

マスクを つけましょう



びょういん、おとしよりがせいかつしている、しせつにいくとき

たくさんのひとがいる でんしゃ、バスに のるとき

じぶんが、かんせん しないために

あなたが、おもいびょうきに なりやすいひとで あるときは、マスクをつけると、かんせんを ふせぐことが できます



おとしより

びょうきが あるひと

にんしん しているひと

COVID-19が ひろがっているときに、たくさんのひとがいる ばしょにいくとき

ほかのひとが、マスクをつけるかは必ずかは、そのひとのかんがえを たいせつに まわりのひとは、ほかのひとに、マスクをつけることや必ずすことを、むりやりもとめないように

※しせつをりようするとき、しごとをしているときに、かいしゃが、かんせんをふせぐために、マスクをもとめることがあります



Information on Kumamoto Consultation and Support Plaza for Foreign Residents

The Plaza offers professional consultations including legal affairs, residence status issues, job hunting, housing and life affairs support in multiple languages. Consultants who speak English, Chinese, Vietnamese, Tagalog, Spanish and Nepali are available at the Plaza as the schedule below as well.

April Schedule

Monday	Tuesday	Wednesday	Thursday	Friday	Saturday	Sunday
27	28	29	30	31	01	02 ·Life Consultation in Chinese ·Educational Consultation
03	04 ·Chinese Consultation	05 ·Vietnamese Consultation Immigrational Consultation ·Life Consultation in Chinese ·German Consultation	06 ·Korean Consultation	07 ·Spanish Consultation ·Life Consultation in Chinese ·English Consultation	08	09 ·Life Consultation in Chinese ·Educational Consultation
10 Closed	11 ·Chinese Consultation	12 ·Mental Counseling ·Tagalog Consultation ·Life Consultation in Chinese ·German Consultation	13 ·Korean Consultation	14 ·Life Consultation in Chinese ·English Consultation	15 ·Free Legal Consultation ·Life Consultation in Chinese	16 ·Immigrational Consultation ·Vietnamese Consultation ·Nepal Consultation ·Educational Consultation
17	18 ·Chinese Consultation	19 ·Housing Consultation ·Vietnamese Consultation ·Life Consultation in Chinese ·German Consultation	20 ·Korean Consultation	21 ·Life Consultation in Chinese ·English Consultation	22	23 ·Life Consultation in Chinese ·Educational Consultation
24 Closed	25 ·Chinese Consultation	26 ·Life Consultation in Chinese ·German Consultation ·One-stop Consultation Service for International	27 ·Korean Consultation	28 ·Life Consultation in Chinese ·English Consultation	29 Showa no hi ※National holiday	30 ·Life Consultation in Chinese ·Educational Consultation
01	02	note: Consultations 1:00p.m~5:00p.m (apart from the ones below) ·Life Consultation in Chinese 1:00pm~6:00pm ·Mental Counseling 3:30pm~5:30pm ·Free Legal Consultation 2:00pm~4:00pm (Reservation required) ·Educational Consultation 1:00pm~3:00pm (Reservation required) ·Immigrational Consultation 1:00pm~4:00pm ·One-stop Consultation Service for International Students 2:00pm~5:00pm				

※ Consultation service could be cancelled due to consultant's personal reasons. Please e-mail or call us beforehand to check if the consultant is available.

Kumamoto Consultation and Support Plaza for Foreign Residents' Facebook

We regularly update information useful to you.

Follow us and be one of the first one to be informed!



Plaza's FB

We are offering variety of information useful to your life. Please check us!



Our website



Our Life affairs guidance

Kumamoto Consultation and Support Plaza for Foreign Residents

Location: 2nd floor of Kumamoto City International Center

Address: 4-18 Hanabata-Cho, Chuo-Ku, Kumamoto City, 860-0806

Tel: 096-359-4995

E-mail: soudan@kumamoto-if.or.jp

Opening hours: Between 10 am and 6 pm

Closed on second and fourth Mondays and between December 29 and January 3

★ If second or fourth Monday is a national holiday, the plaza will be closed the following day instead.

